

Step 1

Your supplies...for Separated Blocks

Below are the estimated number of t-shirts or onesies needed to make a memory quilt with sashing, corner stones, and a border.

Size	t-shirts (12.5" blocks)	onesies (6.5" blocks)
Throw (50" x 64")	12(3x4)	48
Twin (55" x 97")	18(3x6)	72
Full (70" x 98")	24(4x6)	96
Queen (78" x 106")	35(5x7)	140
King (92" x 106")	42(6x7)	168



Step 1

More about your supplies...

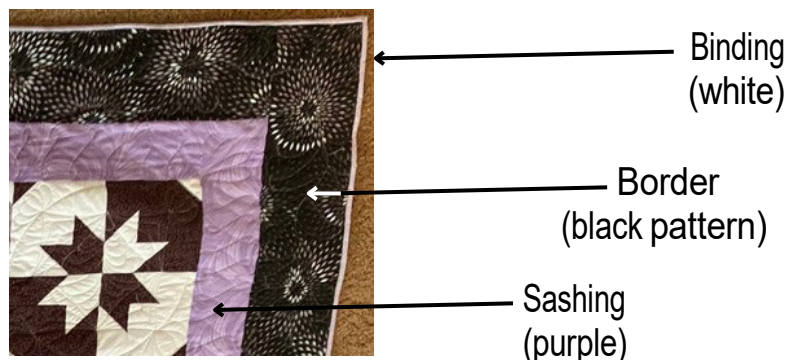
Only cotton or cotton blend clothing (including flannel) can be used. Sweatshirt material may also be too thick unless the whole quilt is made from sweatshirts. No minky or fleece.

A cotton baby blanket can make at least (4) 6.5" blocks or (1) 12" block but will likely make more blocks than that. It depends on the size of the blanket.

If you're ok with it, stains can make a blanket more special. Let us know if you want them included or excluded. Stains will change the amount of fabric available.

A t-shirt quilt needs store bought fabric to finish the project. Once I have the material in my workroom, I can help you chose the fabric that is most complimentary with the t-shirt materials and your tastes.

- 1) The backing fabric MUST extend 4 inches on each side beyond the quilt top. A quilt sized 78" x 106" will need a backing fabric that measures 86" x 114".
- 2) Sashing fabrics are 2.5" strips that surround each t-shirt block.
- 3) Border fabric varies in size and surrounds the entire quilt.
- 4) Binding fabric is the small strip that runs about the edge of the quilt.



Step 2

Mail your material

Bag all your materials into good quality plastic bags that are capable of being sealed. This will protect your memories if the box gets wet in transport.

Use a sturdy cardboard box and remove all other shipping labels before sending.

Mail your material to:

**Pigs in a Blanket Quilting
P.O. Box 387
Concordia, MO 64020**

Be sure to insure your material and track it for the best results.

Don't forget to send us an e-mail when you put it in the mail so that we can keep an eye out for the package. We'll let you know when your material arrives.

pigsinablanketquilts@gmail.com

Step 3

Planning your memory quilt design

After we receive your material, we will contact you to discuss your thoughts on the layout of the quilt and coordinating fabrics. This can be done by e-mail, messenger, phone, video chat, or in-person if you live close enough.

There are several things to consider, including size, budget, colors, and design. Some clients are comfortable trusting me with most decisions. In those cases, I usually get a budget, size range, and general color direction. Other clients want to be included more in the total design process. In those cases, I'm happy to send photos throughout the process and adjust as needed.

Try to remember that handmade, custom pieces can sometimes have small flaws that are unavoidable. I strive to make every project as special as possible.

Step 4

Estimate your cost

The prices listed below are approximate and will depend on several factors. It is possible, after our consultation, that a more detailed quilt may be desired. We will adjust the final price of the quilt after discussing these additions or alterations. The prices listed below include the sashing, border, batting, backing, and binding fabrics.

The price also includes return shipping with tracking and insurance.

Size	with sashing and border
Throw (50" x 64")	\$ 350
Twin (55" x 97")	\$ 500
Full (70" x 98")	\$ 700
Queen (78" x 106")	\$ 975
King (92" x 106")	\$ 1,200

Size	with border only
Throw (52" x 64")	\$ 300
Twin (60" x 96")	\$ 400
Full (72" x 96")	\$ 600
Queen (82" x 106")	\$ 775
King (94" x 106")	\$ 1000

Step 5

Sit back and let us create

Once we have a plan for the memory quilt, it can take several weeks or more to complete the process. I will try to update you on the progress as often as possible. I am still in high school so the amount of time I can dedicate to a project will vary based upon my school workload and other projects.

Rest assured that your memory quilt will be made to last. The process is outlined below to better help you understand why your quilt will take time to create.

1. Each clothing item has fusible interfacing applied to the back to stabilize the fabric before it is cut. This helps prevent stretching during the quilting process and it will help the quilt hold up over time.
2. Each piece of clothing is then precisely cut into blocks and sewn together using a process to fan the seams so that quilt lays better.
3. The sashing and cornerstone fabrics are then cut and sewn to the clothing blocks. Cornerstones may also be made from t-shirt materials.
4. The border is then measured, cut, and sewn to the entire quilt.
5. The backing fabric is loaded onto the quilting machine followed by a layer of batting, and finally the quilt top. The three layers are basted together and then quilted to make the finished product.
6. The quilt is then taken off the longarm machine. A long strip of binding fabric is cut then machine sewn to the quilt top. The binding is finished by meticulously hand sewing it down onto the quilt back.

Some onesies have embroidery that isn't centered. In that case, we will piece together fabric to center the embroidery.



A stack of 6.5" blocks with interfacing already applied and cut.

Once the blocks are cut, they are arranged to determine the best color and pattern distribution.





Applying interfacing before cutting.



Measuring and cutting blocks.



Sewing blocks together.



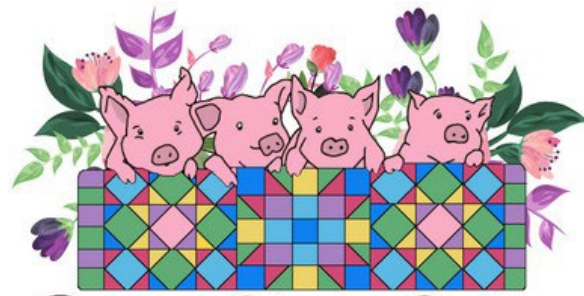
Loading the quilt on the longarm.



Machine applying the front binding.



Hand sewing the back binding.



Pigs in a Blanket Quilting



Your quilt will be finished with either a stippling pattern (above) or an edge-to-edge pantograph pattern (below). A stippling pattern is a gentle, wave-like or puzzle piece pattern. Pantograph designs come in many styles.

